



## Painting and Partial Corridor Restoration

Rowayton Elementary School

### **Addendum #1 – 3/7/19**

The bidder sign-in sheet and a clear version of drawings, which were distributed at the walk-through. These files are provided as attachments to this addendum.

Please note the following changes.

On Demolition Drawings, Elevation 15 on D-1 and Elevation 2 on D-2: Carefully remove existing ¼" plywood panel wainscoting and save for reuse. Remove existing base and ¾" furring strips.

On Architectural Drawings, Elevation 15 on A-2 and Elevation 6 on A-3: Change typical wainscot and base note to the following. Reinstall salvaged ¼" plywood panels on existing framing. Install new ½" gypsum wallboard over plywood. Patch all joints for seamless appearance. Refinish per project manual and drawings.

All other terms, conditions and specifications remain the same as on the original RFP.

If, in the event there are any hazardous materials that need to be addressed in this project, they will be addressed as a separate issue and will not be a part of the proposal. Every attempt will be made to coordinate any additional work with the selected contractor.

The proposals are due on March 12 at 2:00 p.m. (as originally listed).

ROWAYTON E.D.M. SCHOOL CORRIDOR PROJECT PRE-BID WALK THRU 3.5.2019

<u>NAME</u>	<u>COMPANY</u>	<u>EMAIL</u>
PETER WEBSTER	PAW PAINTERS	PWEB172193@aol.com
KAZ BEHBOUDI	RE-TECH	KAZ@RETECHCONSTRUCTION.COM
JUAN MEZA	Meza Electric	jmeza@mezaelectric.com
HERNAN VIDAL	HV CONTRACTOR CORP.	Hervidal@HVCONTRACTORCORP.COM
JOHN GENNARINI	GENNARINI CONST CO	GENNARINI CONST CO@aol.com
Anthony Maggior	maggior Const	info@maggiorconstruction.com
VAUGHN BUTLER	SCHOLAR PAINTING	SCHOLARPAINTING@GMAIL.COM



**PETER WEBSTER PAINTERS, INC**  
 PH 203 592-8753  
 FX 203 250-9736  
 pweb172193@aol.com  
**COMMERCIAL & INDUSTRIAL  
 PAINTING & WALL COVERING**



**MEZA ELECTRIC  
 COMPANY LLC.**  
 License ELC 0121844-E1  
**Juan Meza  
 President**  
 203-847-0264  
 203-461-1215  
 33 Fair Street, Norwalk CT 06851  
 jmeza@MezaElectric.com  
 www.MezaElectric.com



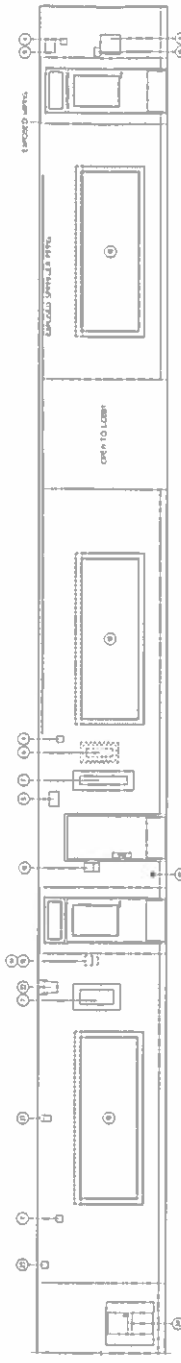
**RE-TECH**  
 GENERAL CONSTRUCTION  
 WWW.RETECHCONSTRUCTION.COM  
**KASRA BEHBOUDI**  
 KAZ@RETECHCONSTRUCTION.COM  
 PO Box 1103  
 FAIRFIELD, CT 06825  
 TEL: 203-818-8774  
 FAX: 203-572-5232



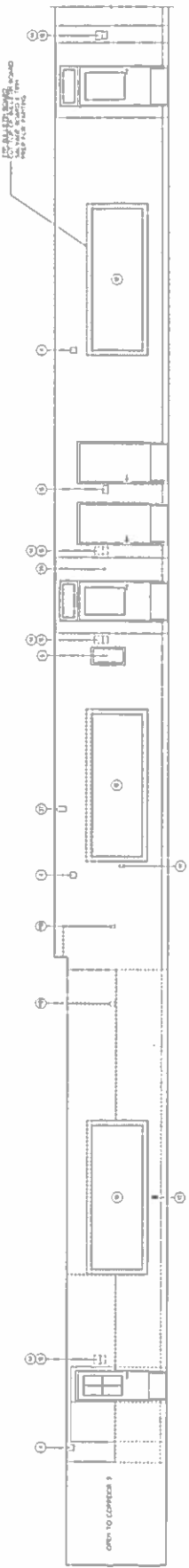
**H.V. CONTRACTOR CORP**  
 GENERAL CONTRACTOR  
**Home Improvement & Renovations**  
 Metal Framing • Drywall • Acoustical Ceiling • Doors & Frames  
 Painting • Electrical • Plumbing • HVAC  
**Hernan Vidal**  
 President  
 240 Wardwell Street  
 Unit 18  
 Stamford, CT 06902  
 203-820-7691  
 License HIC # 602074  
 Full Insured  
 hervidal@hvcontractorcorp.com



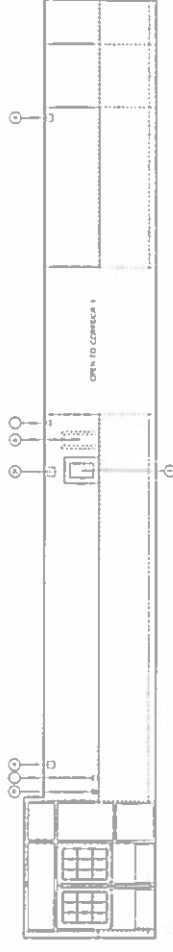




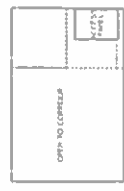
**7** CORRIDOR 7  
SCALE: 1/8" = 1'-0"



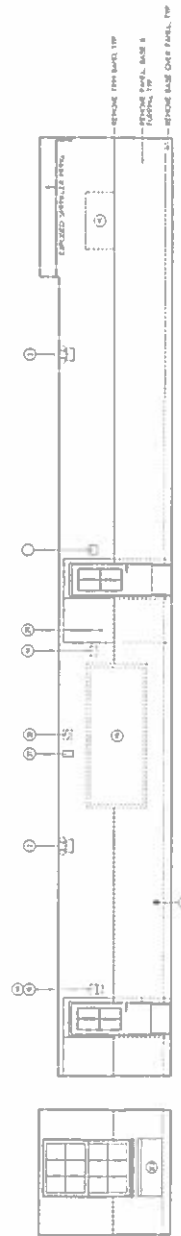
**6** CORRIDOR 6  
SCALE: 1/8" = 1'-0"



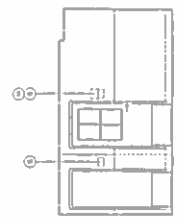
**5** CORRIDOR 5  
SCALE: 1/8" = 1'-0"



**4** CORRIDOR 4  
SCALE: 1/8" = 1'-0"



**3** CORRIDOR 3  
SCALE: 1/8" = 1'-0"



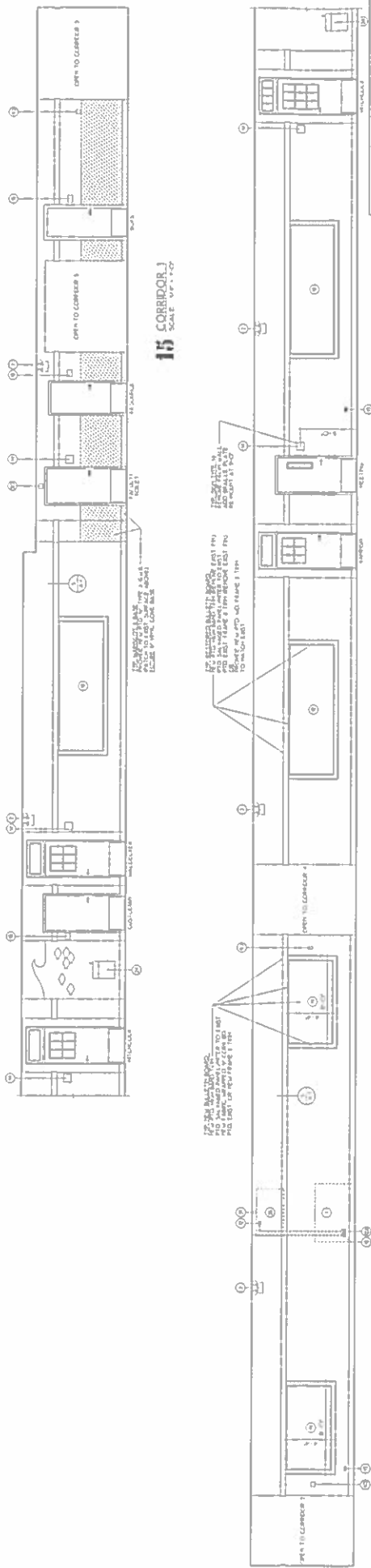
**2** CORRIDOR 2  
SCALE: 1/8" = 1'-0"



**1** CORRIDOR 1  
SCALE: 1/8" = 1'-0"

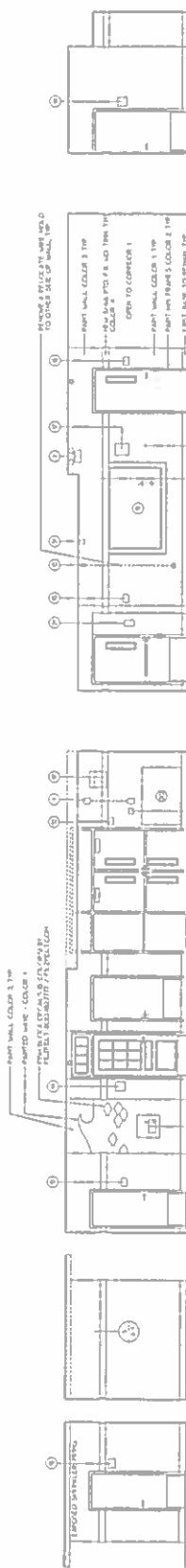
8 1/2" x 11" TITLE FOR SET		CORRIDOR PARTIAL RESTORATION ROWAYTON ELEMENTARY SCHOOL 1 EUSTON AVENUE NEWBRANK, CT	
DATE:	0 12 2009	DESIGNED BY:	GILL & GILL ARCHITECTS, P.C.
REVISED:		PROJECT NO.:	100-00
SCALE:	1/8" = 1'-0"	DWG. NO.:	D-2
		DEMOLITION ELEVATIONS	





**15 CORRIDOR J**  
SCALE: 1/8" = 1'-0"

**14 CORRIDOR J**  
SCALE: 1/8" = 1'-0"



**13 CORRIDOR I**  
SCALE: 1/8" = 1'-0"

**10 CORRIDOR 2**  
SCALE: 1/8" = 1'-0"

**11 CORRIDOR 3**  
SCALE: 1/8" = 1'-0"

**12 CORRIDOR 2**  
SCALE: 1/8" = 1'-0"

**15 CORRIDOR 2**  
SCALE: 1/8" = 1'-0"



**1 VESTIBULE**  
SCALE: 1/8" = 1'-0"

**9 VESTIBULE**  
SCALE: 1/8" = 1'-0"

**5 VESTIBULE**  
SCALE: 1/8" = 1'-0"

**4 VESTIBULE**  
SCALE: 1/8" = 1'-0"

**5 VESTIBULE**  
SCALE: 1/8" = 1'-0"

**6 LOBBY**  
SCALE: 1/8" = 1'-0"

**7 LOBBY**  
SCALE: 1/8" = 1'-0"

**8 LOBBY**  
SCALE: 1/8" = 1'-0"

**ACCESSORY LEGEND**

- 1 SCOPY STATION
- 2 INSTRUMENT LIGHTING
- 3 FIRE ALARM BELL
- 4 BENCH / STOOL
- 5 1 1/2" TYP
- 6 LAMINATED PART SIGN
- 7 ELECTRICAL PANEL - RECESSED
- 8 ELECTRICAL CABINET - RECESSED
- 9 REPELLANT MAT
- 10 ELECTRICAL BURN COVER PLATE
- 11 ELECTRICAL BURN COVER PLATE - RECESSED
- 12 ELECTRICAL BURN COVER PLATE - SURFACE MOUNTED
- 13 ELECTRICAL BURN COVER PLATE - SURFACE MOUNTED
- 14 ELECTRICAL BURN COVER PLATE - SURFACE MOUNTED
- 15 ELECTRICAL BURN COVER PLATE - RECESSED
- 16 ROOM SIGN READER SIGN - TO BE RECESSED
- 17 WALL PLATE
- 18 HUNG RECEPT
- 19 BULLETIN BOARD - 18" x 24" - RECESSED / PART COLOR 1
- 20 HANGING ENCLOSURE
- 21 WOOD SWITCHESS
- 22 WIRELESS ROUTER
- 23 RECESSED RECEPT SIGN FOR SIGN
- 24 RECEPT SIGN
- 25 RECEPT SIGN
- 26 RECEPT SIGN
- 27 RECEPT SIGN
- 28 RECEPT SIGN
- 29 RECEPT SIGN
- 30 RECEPT SIGN
- 31 RECEPT SIGN
- 32 RECEPT SIGN
- 33 RECEPT SIGN
- 34 RECEPT SIGN
- 35 RECEPT SIGN
- 36 RECEPT SIGN
- 37 RECEPT SIGN
- 38 RECEPT SIGN
- 39 RECEPT SIGN
- 40 RECEPT SIGN
- 41 RECEPT SIGN
- 42 RECEPT SIGN
- 43 RECEPT SIGN
- 44 RECEPT SIGN
- 45 RECEPT SIGN
- 46 RECEPT SIGN
- 47 RECEPT SIGN
- 48 RECEPT SIGN
- 49 RECEPT SIGN
- 50 RECEPT SIGN
- 51 RECEPT SIGN
- 52 RECEPT SIGN
- 53 RECEPT SIGN
- 54 RECEPT SIGN
- 55 RECEPT SIGN
- 56 RECEPT SIGN
- 57 RECEPT SIGN
- 58 RECEPT SIGN
- 59 RECEPT SIGN
- 60 RECEPT SIGN
- 61 RECEPT SIGN
- 62 RECEPT SIGN
- 63 RECEPT SIGN
- 64 RECEPT SIGN
- 65 RECEPT SIGN
- 66 RECEPT SIGN
- 67 RECEPT SIGN
- 68 RECEPT SIGN
- 69 RECEPT SIGN
- 70 RECEPT SIGN
- 71 RECEPT SIGN
- 72 RECEPT SIGN
- 73 RECEPT SIGN
- 74 RECEPT SIGN
- 75 RECEPT SIGN
- 76 RECEPT SIGN
- 77 RECEPT SIGN
- 78 RECEPT SIGN
- 79 RECEPT SIGN
- 80 RECEPT SIGN
- 81 RECEPT SIGN
- 82 RECEPT SIGN
- 83 RECEPT SIGN
- 84 RECEPT SIGN
- 85 RECEPT SIGN
- 86 RECEPT SIGN
- 87 RECEPT SIGN
- 88 RECEPT SIGN
- 89 RECEPT SIGN
- 90 RECEPT SIGN
- 91 RECEPT SIGN
- 92 RECEPT SIGN
- 93 RECEPT SIGN
- 94 RECEPT SIGN
- 95 RECEPT SIGN
- 96 RECEPT SIGN
- 97 RECEPT SIGN
- 98 RECEPT SIGN
- 99 RECEPT SIGN
- 100 RECEPT SIGN

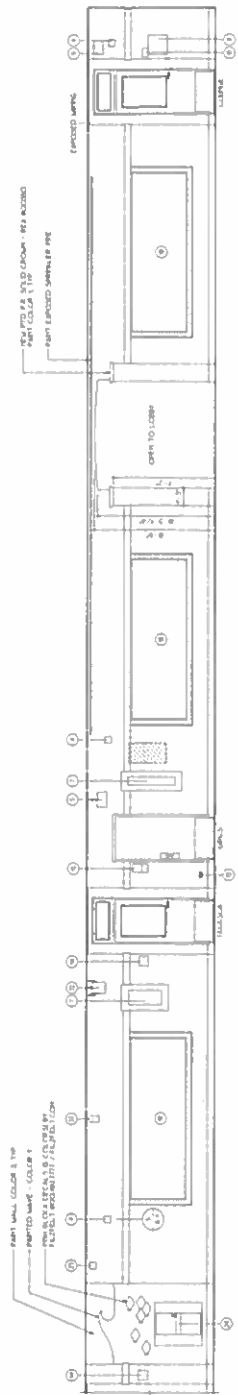
**8 1/2" DIA. HOLES FOR BARS**

**CORRIDOR PARTIAL RESTORATION**  
**ROWAYTON ELEMENTARY SCHOOL**  
1 FORTON AVENUE  
ROCKY HILL, CT

DATE	FILE NAME
8-13-89	GILL & GILL ARCHITECTS, A.P.C.
REVISED	PROJECT NO. 89-002
SCALE	DATE: 11/11/89
DATE: 11/11/89	BY: GGG
1/8" = 1'-0"	1/8" = 1'-0"

**A-2**

**INTERIOR ELEVATIONS**



7 CORRIDOR 1  
SCALE 1/4" = 1'-0"

